



# MEDICAL AND PHARMACEUTICAL PROJECT «NATURAL DOCTOR» (CONCEPTUAL ASPECTS)



2012





# MEDICAL AND PHARMACEUTICAL PROJECT «NATURAL DOCTOR»



**MIFTAKHUTDINOV SALIM GALIEVICH**, born 01/22/1952, (Kostroma, Russia), General Designer of organizational and economic projects, "NATURAL DOCTOR", "UNIOLYMP", "TRANSNET".

Author of organizational and economic models of Dialectical public and state systems (DPSS), territorial and industrial socio-economic complexes (TISEC).

In 1988 he defined the universal law of harmonious development.

*Academician:* International Academy of the Integration of Science and Business (IAISB), International Academy of the Spiritual Unity of the Peoples of the World (IASUPW), the European Academy of Natural Sciences (EANS).

*Public awards:* Medal of Paul Ehrlich, medal "Knight of Science and Technology", order "For Professional Honor, Dignity and Honorable Reputation," medal "For Devotion To The Profession," order "Pride of Russia".

E-mail: [president@edas.ru](mailto:president@edas.ru)





# MEDICAL AND PHARMACEUTICAL PROJECT «NATURAL DOCTOR»



*The aim of implementation of the medical-pharmaceutical system "Natural Doctor" is:*

Reducing morbidity and improving health rate of the population by integration of innovative medical techniques and personalisation of environmentally friendly means of harmonization of body bioprocesses for prevention, treatment and rehabilitation of diseases, using mainly appropriate for the body's nature natural agents.







# MEDICAL AND PHARMACEUTICAL PROJECT «NATURAL DOCTOR»



*The Project "Natural Doctor" is implemented on public-private basis*

The state, with regard to the health system and on the basis of relevant regulations, forms a vector of integrative medicine, according primarily to the existing scientific research, methodological educational potential and material technical basis.

In order to coordinate and implement the objectives of innovation and integrated vector of health care system development are created:

1. National Coordination Council of public-private partnership, organized on a contractual basis between the members of the Partnership.
2. National Research and Training Center for Integrative Medicine, consisting of:
  - the center of innovative medical technologies;
  - the center of innovative pharmaceutical technology;
  - Center for Innovative Energy Information Technologies;
  - Center for Innovative Medical Products (products, diagnostic and research equipment and medical supplies, etc.).



# MEDICAL AND PHARMACEUTICAL PROJECT «NATURAL DOCTOR»



*The organizational structure of the state component  
of the partnership "NATURAL DOCTOR"*

**National Coordinating Council  
of Public-Private Partnership**

**National Research and Educational and Methodological Center  
for Integrative Medicine**

**Center  
for Innovative  
Medical  
Technologies**

**Center  
for Innovative  
Pharmaceutical  
Technology**

**Center  
for Innovative  
Energy  
and Information  
Technology**

**Center  
for Innovative  
Medical  
Products**





# MEDICAL AND PHARMACEUTICAL PROJECT «NATURAL DOCTOR»



*The organizational structure of the private component  
of the partnership "NATURAL DOCTOR"*

**National Medical and Pharmaceutical  
Holding "Natural Doctor"**

**Pharmaceutical  
companies  
for the production  
of allopathic  
medicinal  
agents**

**Pharmaceutical  
companies  
for the production  
of energy-  
information  
medicines**

**Medical  
and technical  
companies  
for the production  
of medical  
equipment**

**The regional network of health care and prophylactics companies  
"Natural Doctor"**

**Regional network of drug store and advisory companies  
"Natural Doctor"**





# MEDICAL AND PHARMACEUTICAL PROJECT

## «NATURAL DOCTOR»



### BASIC POSTULATE OF TREATING AND PREVENTING DISEASES

Basic postulate of treating and preventing diseases

The body is an integral part of the natural environment and functions in contexts of the four laws of dialectics:

The Law of harmonious development;

The Law of the unity and struggle of opposites;

The Law of the transition of quantitative changes into qualitative;

The Law of negation of negation.

The harmonious development of bioprocesses in the body is provided by dual components of physical chemical and energy information components.

Quantitative changes in physical chemical and energy information characteristics of the organism cause qualitative changes in the biological processes of the body.

Disharmony of physical chemical and energy information components leads to the development of a disease in the body and to the chronic character of the acute process.

**Determining the degree of deviation with the subsequent correction of the physical chemical component of the body with the use of allopathic drugs and energy information component of the body by using homeopathic medicines is the main aim of medical and pharmaceutical system "NATURAL DOCTOR"**



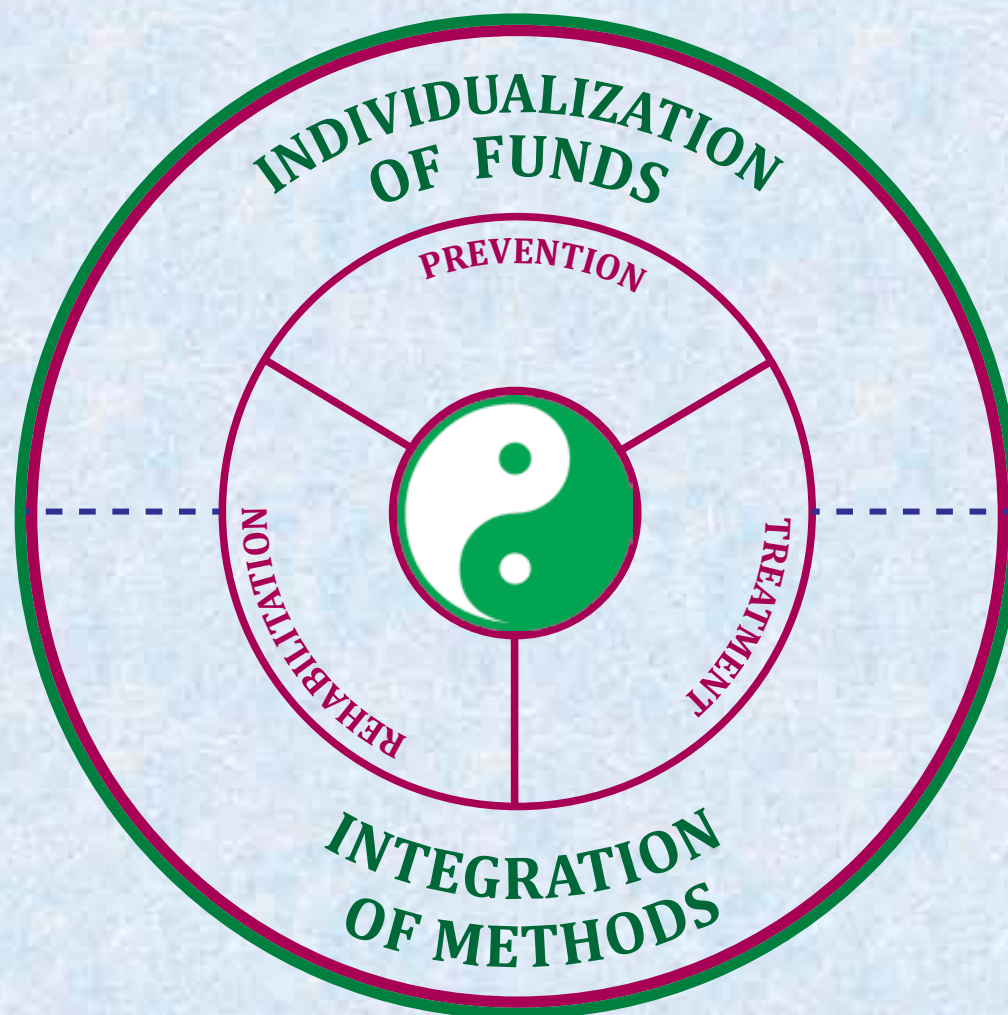




# MEDICAL AND PHARMACEUTICAL PROJECT «NATURAL DOCTOR»



Structure of the integrative medical-pharmaceutical system "NATURAL DOCTOR"







# MEDICAL AND PHARMACEUTICAL PROJECT

## «NATURAL DOCTOR»



### Dynamic matrix of prevention, treatment and medical rehabilitation "NATURAL DOCTOR"

METHODS	PREVENTION			TREATMENT			REHABILITATION		
	homeopathic	drugfree	allopathic	homeopathic	allopathic	homeopathic	drugfree		
<i>Lymphatic drainage, other drainage</i>									
<i>MMetabolic (mineral supplements multivitamin complexes)</i>									
<i>Diet, table mineral water regimen, exercise, physiotherapy, recreation</i>									
<i>Endolymphatic therapy</i>									
<i>Symptomatic therapy</i>									
<i>Detoxification constitutional</i>									
<i>Anti-stress treatment</i>									
<i>Specific complexes</i>									
<i>Symptomatic therapy</i>									
<i>Nosological systems</i>									
<i>Vitamin and mineral supplements</i>									
<i>Diet, mineral water, FTL, exercise, health resort</i>									



# MEDICAL AND PHARMACEUTICAL PROJECT «NATURAL DOCTOR»



**COMPLEX SYSTEM OF  
PREVENTION, TREATMENT AND MEDICAL REHABILITATION  
USING PHARMACOTHERAPEUTIC  
AND ENERGY INFORMATION METHODS OF IMPACT  
ON THE BODY PROVIDES:**

- **Systematic and comprehensive impact on the body.**
- **Safety of the methods and combined tools for effecting the body.**
- **The use of all age groups.**
- **Simultaneous removal of the symptoms and causes of the disease.**
- **Opportunity to cure chronic diseases.**
- **Minimizing side effects and addiction to the applied methods.**





# MEDICAL AND PHARMACEUTICAL PROJECT

## «NATURAL DOCTOR»



### RELEVANCE

Health problems associated with various disorders of human health are becoming more acute and costly due to the fact that the dynamics of the changes made by human activities in people's environment exceeds the dynamics of changes of the adaptive and defense capacity of the organism given to it by nature.



In addition to the environmental problems the negative impact of the synthesized (chemical) allopathic medicines dramatically comes out. According to the World Health Organization (WHO) the number of deaths from drug poisoning in the structure of the overall death rate of people in economically developed countries, has a tendency to increase. Tolerance (from Latin: patience) of the body is not unlimited, since actively deteriorating external and internal environmental factors.





# MEDICAL AND PHARMACEUTICAL PROJECT

## «NATURAL DOCTOR»



### ABOUT THE UNDERLYING CAUSES OF THE HEALTH CARE PROBLEMS

*Provision of equal conditions for the development of alternative medicine, is the primary task of the health system.*

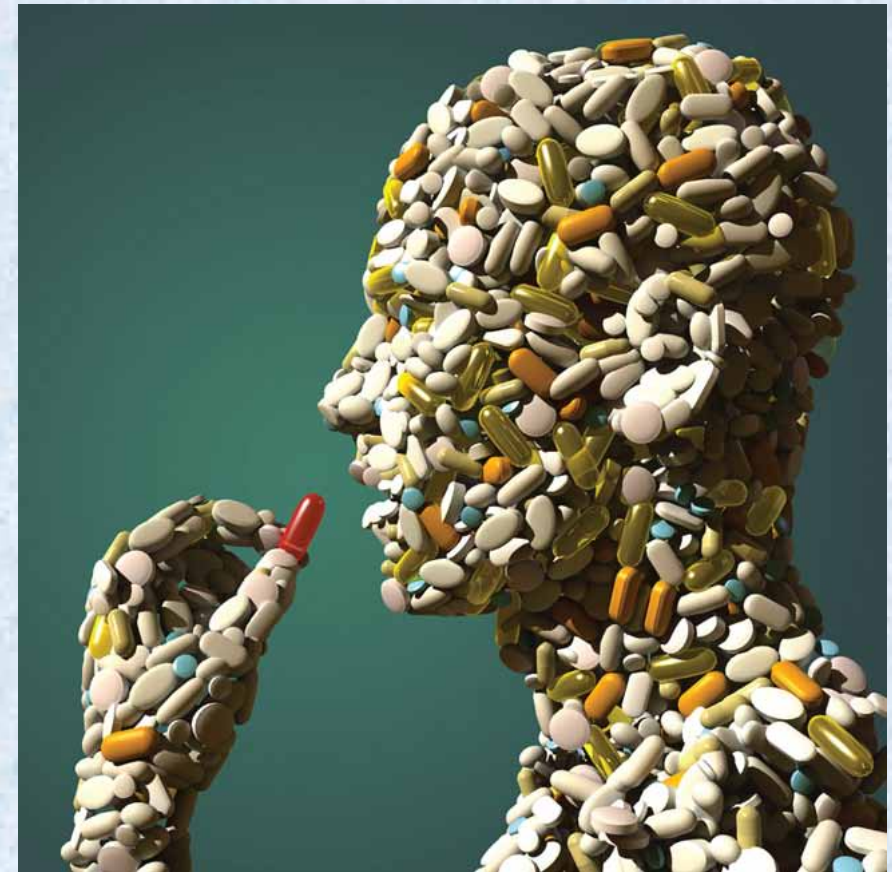
In modern medicine, the method of allopathy is dominant, when physicians use large doses of mostly synthetic (chemical) drugs for the treatment of patients. However, by their very nature these drugs are xenobiotics and their wide use in the treatment of diseases aggravates existing environmental risk factor, increasing the antigen load on the human body.

#### *Allopathic effects on the body:*

*First*, usually the consequences rather than the causes of diseases are removed, and as a rule treatment of individual components, but not the body as a whole system, which has its own specific, unique features takes place.

*Second*, new generations of allopathic drugs are no less stressful burden for the body than the disease itself, and often they lead to a decrease in the effects of the immune and other defense subsystems and, as a consequence lead to chronic diseases, or other more serious diseases.

*Thirdly*, new mutations are generated by infectious microbial environment of the body, against which they were created, leading to the emergence of new modified microbes that are insensitive to these drugs, and as a consequence, the need to re-create new and more powerful drugs, which have a more stressful shock load on the body.







# MEDICAL AND PHARMACEUTICAL PROJECT

## «NATURAL DOCTOR»



### ADVANTAGES OF HOMEOPATHIC THERAPY

**Action at the level of the whole organism.** Homeopathic (energy information) drug has a profound general regulating effect on the body. Normalizes the disease impaired mechanisms of self-regulation, activation of the processes leading to recovery. It is this treatment that eventually provides long-term remission and sustained regeneration of the health.

**Efficiency.** Homeopathic medicines cause soft, durable and optimal recovery and complete elimination of the causes of disease in the shortest, safe and harmless way. The structure of complex homeopathic medicines includes several one-component agents, so they have a relatively broad spectrum of activity. Patient's body, which is already often not sensitive to high doses of pharmacotherapeutic (allopathic) medicines, responds to the healing impulse of homeopathic medicines, mobilizing its reserve capacity.

**Safety.** Homeopathy - this is gentle therapy. The basis of homeopathic medicines is the natural raw material of plant and mineral origin. Homeopathic remedies are prepared by the technology proposed by the founder of homeopathy, Samuel Hahnemann, and elaborated over two centuries by his followers. Products contain components that have no toxic or allergenic concentrations. The undoubted advantages of homeopathic remedies are their compatibility with other types of therapy, and lack of toxicity, because of ultra-low doses of medicinal substances included in the products.

**The absence of contraindications.** The method of homeopathy has no contraindications. This is due to extremely low (energy information) initial doses of substances that are in homeopathic medicines. Therefore, homeopathic medicines are safe for the body, have no side effects and compatible with other drugs.

**Lack of addiction.** In the process of preparation of homeopathic medicines using the principle of step by step dilution and dynamization. In this energy information characteristics of atoms and trace elements of the initial substance pass into the solution. Therefore, even in the absence of the molecules of initial substances in the solution, homeopathic remedy keeps its preconfigured energy information basis, causing a reaction of the body. There is no phenomenon of addiction in homeopathic therapy.

**Availability.** Due to safety, there are no contraindications and addiction and therefore complex homeopathic medicines are sold without a prescription. According to the instructions you yourself can choose the most suitable product with the indications for use.





# MEDICAL AND PHARMACEUTICAL PROJECT «NATURAL DOCTOR»



## ALLOPATHY AND HOMEOPATHY IN THE COMBINED USE



Hippocrates compared a disease to a tree, which roots is the cause of disease, and the crown is its consequences. Therefore, it is necessary to treat the disease from two sides simultaneously: the roots - on the base of the principle of "similar cures similar" (the basic principle of homeopathy), and the crown - on the base of the principle "opposite cures opposite" (the key principle of allopathy).

A wide range of complex homeopathic remedies (CHR) in different forms, allows doctors of any specialties to use them in medicine. However, most doctors consider homeopathy an effective, but still a new method, to which the modern system of health care does not pay enough attention.

The results of combined allopathic and homeopathic therapy use in outpatient and inpatient units established:

- improved efficiency and reduced duration of treatment, reduction of side effects of allopathic medicines;
- regulating CHR effect on the body with enhanced function of the excretory organs;
- the possibility of reducing the usual therapeutic doses of strong chemicals during treatment with homeopathic remedies;
- the possibility of replacing allopathic drugs by more efficient CHRs, thus reducing the costs of health care.

**Clinical studies of combination therapy with CHRs can reasonably be recommended for inclusion in the scheme of medical treatment along with pharmacotherapeutic agents.**







# MEDICAL AND PHARMACEUTICAL PROJECT

## «NATURAL DOCTOR»



### DUAL CHARACTER OF ALLOPATHIC AND HOMEOPATHIC THERAPY

**Allopathic medicines** are, primarily, synthetic (chemical) drugs that are used in a variety of therapeutic doses (large and small) and operate on the principle of "the opposite cures opposite."

**Homeopathic remedies** are energy information preparations made with the use of technology of step by step dynamization tuning of plants or initial mineral substances in low and high dilutions, and acting according to the principle of "similar cures similar." Energy information carriers of characteristics of molecule and trace element combinations of the original substance are photons, which transfer energy information characteristics of atoms of molecules and trace elements of substances in the solution (water or alcohol) during step by step dynamization.

**Allopathic and homeopathic treatment** is a physical chemical and energy information corrective effect on the body, which is preceded by a preliminary diagnosis of the status of the body to determine the deviations in the biological processes.

**Dual character of allopathic and homeopathic effects on the organism harmonises biological processes in the body.**







# MEDICAL AND PHARMACEUTICAL PROJECT «NATURAL DOCTOR»



## MEDICAL AND PHARMACEUTICAL SYSTEM "NATURAL DOCTOR"

**"NATURAL DOCTOR"** is a comprehensive research-and- production medical and pharmaceutical system for development and implementation of for adequate to the body natural treatments, medical rehabilitation and disease prevention by the combined use of primarily, allopathic and homeopathic medicines with the account of environmental characteristics of the regions and the internal environment of the body.

**"NATURAL DOCTOR" is an innovative complex system that includes:**

- *A system of individualization of treatment, medical rehabilitation and prevention of diseases in the context of the organism characteristics and environmental factors.*
- *Research aimed at creating and improving medical techniques (treatments, medical rehabilitation and prevention);*
- *Research aimed at the development and improvement of allopathic and homeopathic medicines and dietary supplements as well;*
- *Manufacture of allopathic and homeopathic medicines, as well as biologically active supplements for innovative methods of effective treatment of medical rehabilitation and disease prevention;*
- *The use of high accuracy diagnostic systems;*
- *The use of quantum generators for exposure to energy information effects on the body;*
- *The use of water purification and structurizing systems;*
- *The network of medical and diagnostic centers and drug store and consultancy centers "NATURAL DOCTOR" in different regions of the country.*





# MEDICAL AND PHARMACEUTICAL PROJECT «NATURAL DOCTOR»



## RESEARCH AND PRODUCTION COMPLEX OF INNOVATIVE TECHNOLOGIES



Research and production complex ensures the development and production of innovative products of the new generation on the basis of:

- technologies, polymorphic modification of pharmaceutical substances for the production of highly effective drugs of a wide range of action;
- technologies of extracting energy information compounds from natural substances for the production of active pharmaceutical ingredients and highly effective medicines with no side effects.





# MEDICAL AND PHARMACEUTICAL PROJECT «NATURAL DOCTOR»



## Research and production complex of Natural Medicine and Human Internal Environment



**Research and Production Center provides research and production of allopathic and homeopathic medicines in the form of tablets, capsules, ampoules, drops, oils, ointments, etc., in accordance with international standard «GMP». The center includes:**

- **Research and development and treatment and prophylactic center;**
- **Production and storage facility;**
- **Marketing and commercial center.**





# MEDICAL AND PHARMACEUTICAL PROJECT «NATURAL DOCTOR»



## REGIONAL MEDICAL DIAGNOSTIC NETWORK



Medical - diagnostic centers "Natural Doctor" carry out consultation and diagnostic, therapeutic, prophylactics and methodological functions.  
The production drug stores of centers produce natural organic medicines to suit the individual patient's characteristics.





# MEDICAL AND PHARMACEUTICAL PROJECT «NATURAL DOCTOR»



## DRUGSTORE AND ADVISORY NETWORK



Drugstore and advisory network "Natural Doctor" with phyto-bar provides services to the public for rapid diagnosis, free consulting services to the physicians and a complex of medicines for implementation of the integrative (combined) schemes for prevention and treatment of diseases.





# MEDICAL AND PHARMACEUTICAL PROJECT «NATURAL DOCTOR»







# MEDICAL AND PHARMACEUTICAL PROJECT «NATURAL DOCTOR»



## ***WE INVITE FOR PARTNERSHIP***

for the formation of an innovative health care system, providing the dual objective - to minimize morbidity and maximize longevity.

Medical and pharmaceutical system of integrative medicine, formed by the state in partnership with business structures, that fulfill the project "Natural Doctor", allows to achieve the natural, dual goal of the health care system.

**Medical and pharmaceutical system "NATURAL DOCTOR" -  
is the way to health and longevity.**

**BE HEALTHY AND LIVE LONG**

*Authors*

The Russian Federation, 117519, Moscow, str. B. Serpuhovskaya, 10.  
Tel: +7 (499) 237-23-74. E-mail: referent@edas.ru